

John crane SB2 mechanical seal catalogue

John crane SB2 description

operation condition:

- Stuffing box pressure max. 1.5mpa
- Seal pressure max. 1.5mpa
- Speed max. 15 m/s
- Temperature max. 180 °C

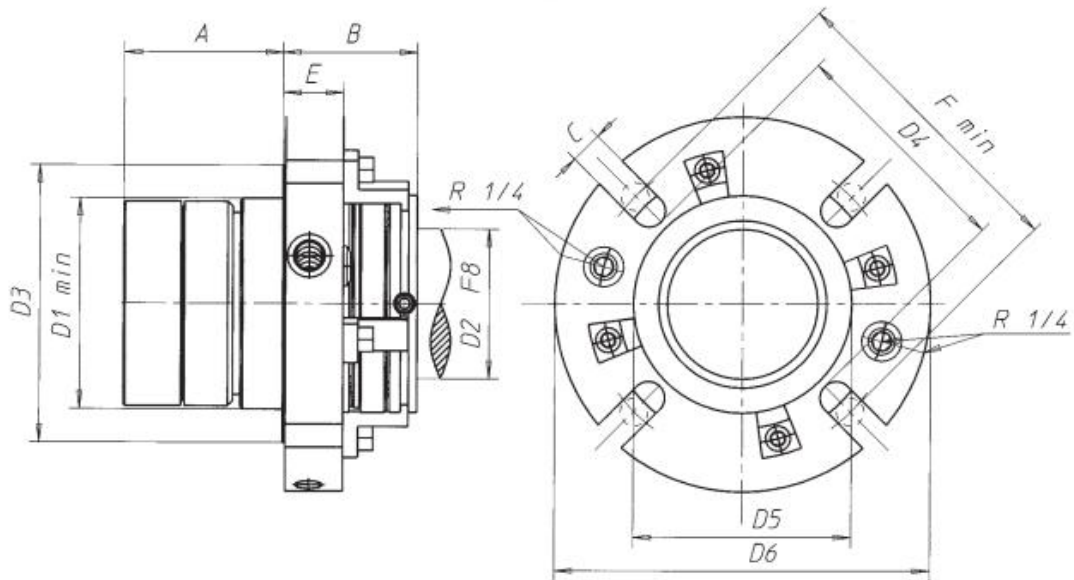
Materials:

- Seal Faces: SiC/Carbon, SiC/SiC
- O-rings: Viton PTFE, EPDM
- Metals: 304, 316L stainless.
- Springs: Hastelloy alloy

John crane SB2 features

John crane sb2 have advanced features, that is patented seal holder and rubber thrust ring. And which decrease the risk of damage seal and longer life time of seal. The balanced design of SB2 ensure pressure shock not affect seal operation, make it more reliable. SB series seal is apply to grinding fluid.

John crane SB2 drawing



John crane SB2 size chart

Seal Size	A	B	C	E	D1	D3	D4	F	D5	D6
35	57	49	13	20	58	79	68	91	62	130
38	59	52	13	23	62	86	72	98	66	130
40	59	52	13	23	62	86	72	98	66	130
43	59	52	13	23	67	89	77	101	70	130,150*
45	59	52	13	23	69	93	79	105	75	130,150*
48	60	53	13	23	72	93	82	105	75	140,150*
50	60	53	13,17	23	74	99	84	111/115	77	140,170*
53	60	53	13	24	76	99	86	111	80	140,170*
55	64	53	13,17	24	79	99	89	111/115	82	150,170*
58	64	53	13	24	83	99	93	111	84	150
60	64	53	13,17	24	85	111	95	123/127	87	150,170*
63	72	60	17	25	90	111	99	127	90	160
65	72	60	17	25	93	111	102	127	92	160,170*
68	72	60	17	25	95	111	104	127	95	170
70	72	60	17	25	95	139	105	155	98	170,220*
80	74	65	17	29	109	139	118	155	111	200,220*
85	78	70	17	30	114	149	123	165	111	200,220*
90	78	70	17	30	119	149	128	165	120	200,220*
95	78	70	17	30	125	149	134	165	125	200
100	76	76	17	34	129	159	138	175	131	220
105	76	76	17	34	135	169	144	175	134	220
110	76	76	17	34	140	169	149	175	139	230
115	76	76	17	34	150	179	160	185	150	230
120	76	76	17	34	157	188	170	194	158	245
125	76	76	17	34	160	189	175	194	170	270
130	84	86	17	36	166	194	180	210	174	280
135	84	86	17	36	172	199	185	215	179	280
140	84	86	17	36	178	206	192	222	187	280